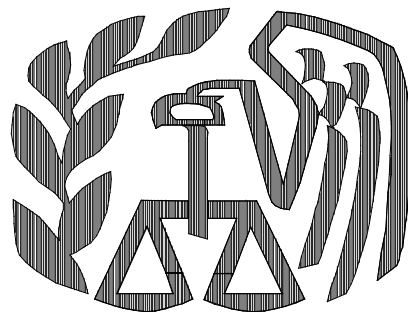


Statistics of Income (SOI) Division



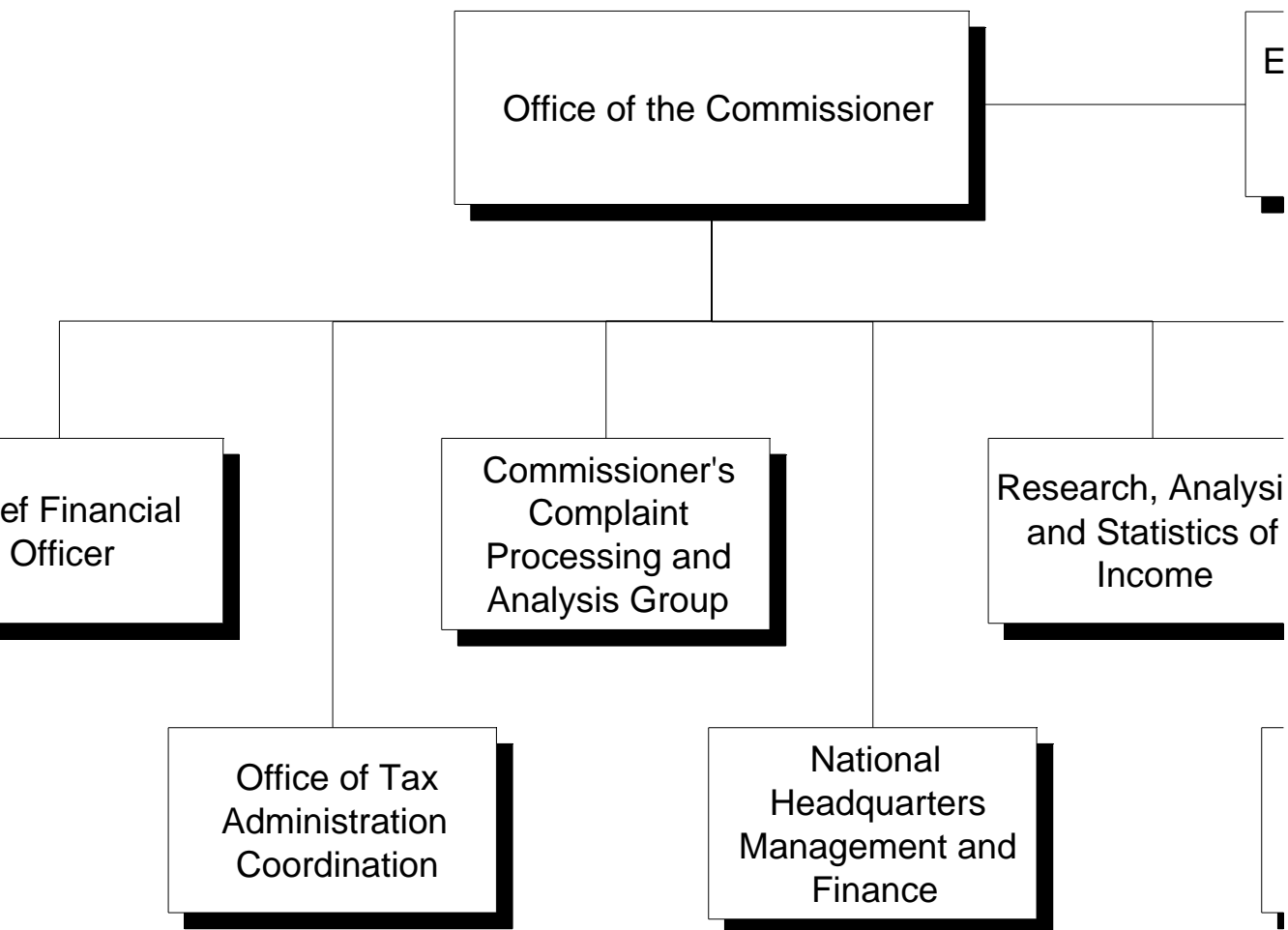
INTERNAL REVENUE SERVICE

Who Uses SOI Data?



- **Treasury Department's Office of Tax Analysis**
- **Congress' Joint Committee on Taxation**
- **Commerce, Bureau of Economic Analysis (BEA)**
- **IRS**
- **Other Government agencies**
- **Academic & private researchers**

Overall National Headquarters Organization Structure



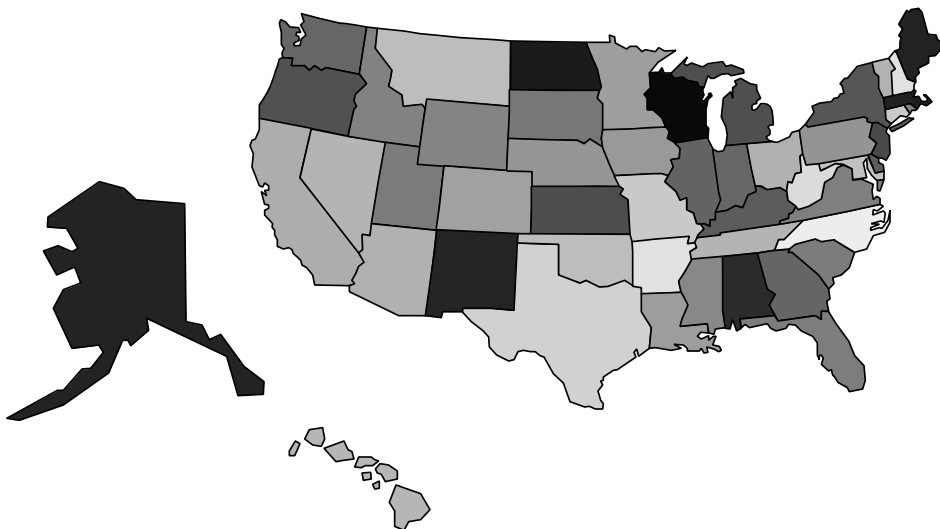
Data Dissemination in SOI

- **Directly to Customers**
- **Via Internet**
 - **SOI Data on the Internet**
 - **Over 600 Files Available - Individual, Corporation Partnership, Exempt Organizations, and more.**
 - **IRS Web Site**
<www.irs.gov/product/tax_stats/index.html>
- **Through Statistical Information Services Office Responding to Info Requests (3,500-4,000/year)**

State Individual Income Tax Data

Tax Year 1998 classified by State and AGI

**Tax Year 1997 Expansion of AGI Sizes
and number of Data Items**



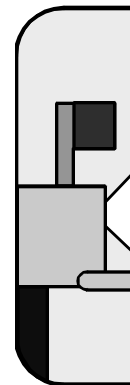
1998-1999 Migration Flow Data

- **County-to-County Migration Data**
- **County Income Data**
- **State-to-State Migration Data**



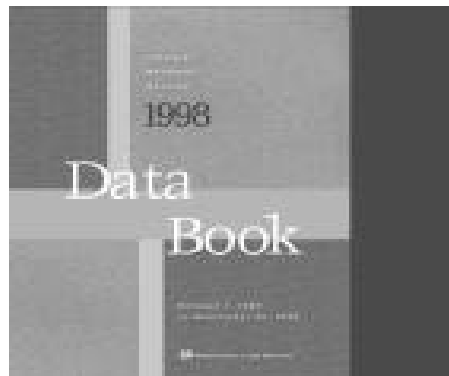
Tax Year 1997 Zip Code Data

- **Selected Income and Tax Items**
- **AGI Income Size Classes**
- **Schedule C and F data**
- **Annual Data Release**



1998 IRS Data Book

- **Selected Data from Various Areas of IRS**
- **Available on the IRS Web**
- **Next Volume 1999 by end of year**



Recent or Upcoming Data Releases

- **SOI Summer Bulletin - 1998 Sole Proprietorships NAICS data**
- **Corporation Complete Report 1997**
- **Fall Bulletin - 1998 Partnership NAICS data**



Servicing Customer Needs



- **CD-ROM Technologies**
- **Improvements to SOI Website**
- **E-mail announcements to Customers**
- **Library Enhancements**